



Richmond Villas

LIFESTYLE VILLAGE



Apartment Living

Apartment Living

New Apartments - Expressions of Interest

An architectural landmark to be located on the firth of Thames.

We have 24 existing apartments in Stage 1 and we are taking Expressions of Interest for our Stage 2 apartments that will be built in the near future.

Register your interest today!

Three storied apartment block includes

- 2 bedroom and 1 bedroom units with private balcony
- Designated car parking for vehicles
- Shared lounges with balconies

Beautifully designed contemporary apartment living.

Open plan quality designed, single level apartment living with North & South facing balconies perfectly positioned with fantastic views of the sun, sea, Kauaeranga river and Coromandel ranges.

So many fabulous features, quality kitchen and bathroom offering warmth and light. Elegantly finished dining, lounge, bedroom and covered balcony.

Enjoy the luxury of the amenities - shared lounges on 3 levels capturing views from the East and West, with the Community Lodge right next door to use at your own leisure.

A peaceful and quiet location in close proximity to shops, cafes and walkways. Richmond Villas offers you a unique lifestyle situated in the town of Thames the perfect location to enjoy a fun filled retirement.

Stage 1 - Apartment approximate prices range from;

1 Bedroom From \$554,000

2 Bedroom From \$610,000

These prices are as of January 2026

A small deposit is required to secure your Apartment.

Stage One is now completed.



Artist Impression — Western Lounge, a shared amenity

These plans are illustrated only and are subject to change without notice



Artist Impression — Southern Main Lounge, a shared amenity

These plans are illustrated only and are subject to change without notice



Show Home Photo — Kitchen, Dining & Lounge with North balcony view.

Furniture is not included in purchase price



Show Home Photo — Kitchen, Dining area

Appliances are included in the purchase price, (excluding microwave).



Show Home Photo — Bedroom with North balcony view.

Furniture is not included in the purchase price



*Show Home Photo —
Bathroom*

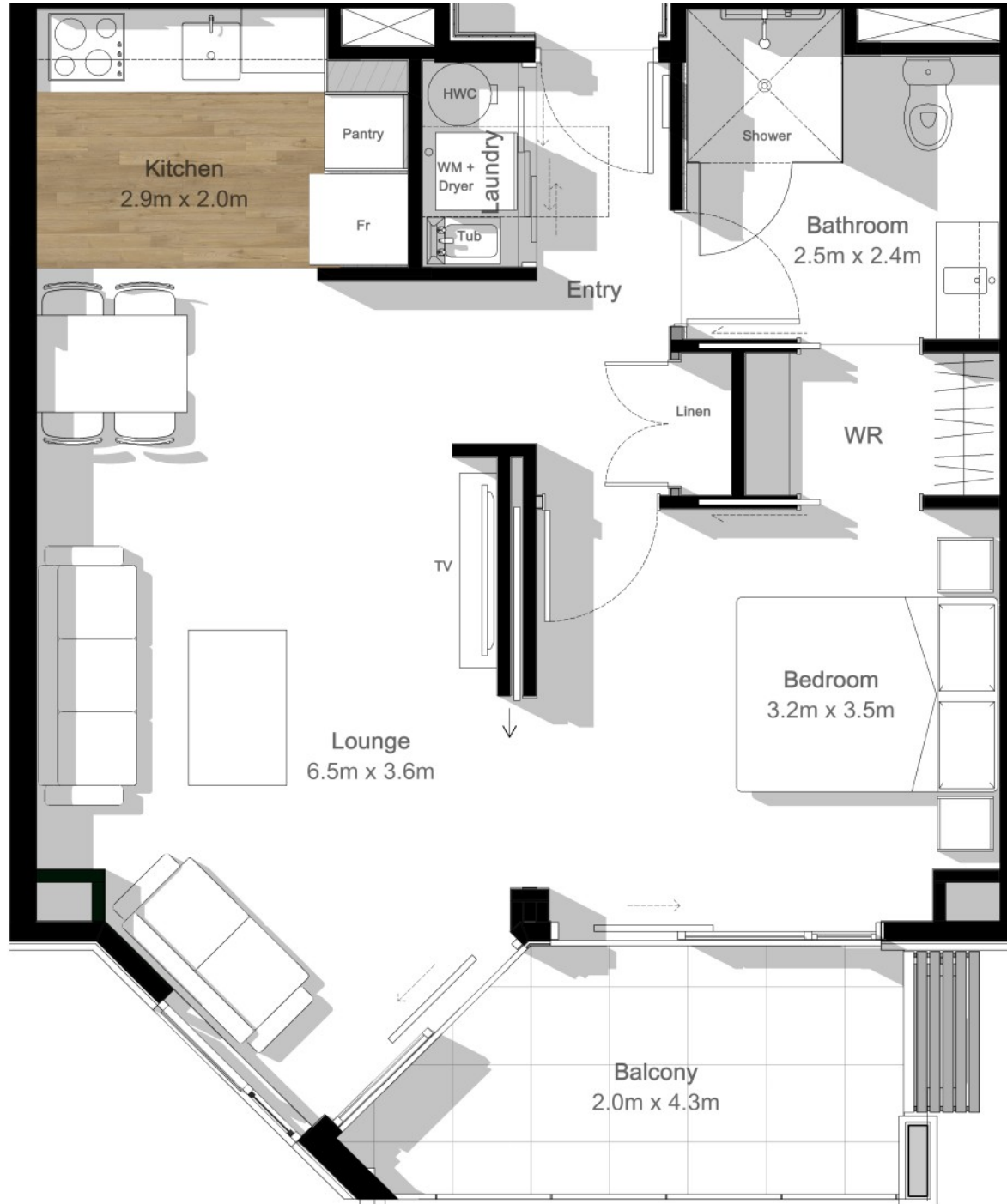
1 x Bedroom

Apartment: 56.90 m²

Balcony: 8.00 m²

Total Area: 64.90 m²

(Not to scale)



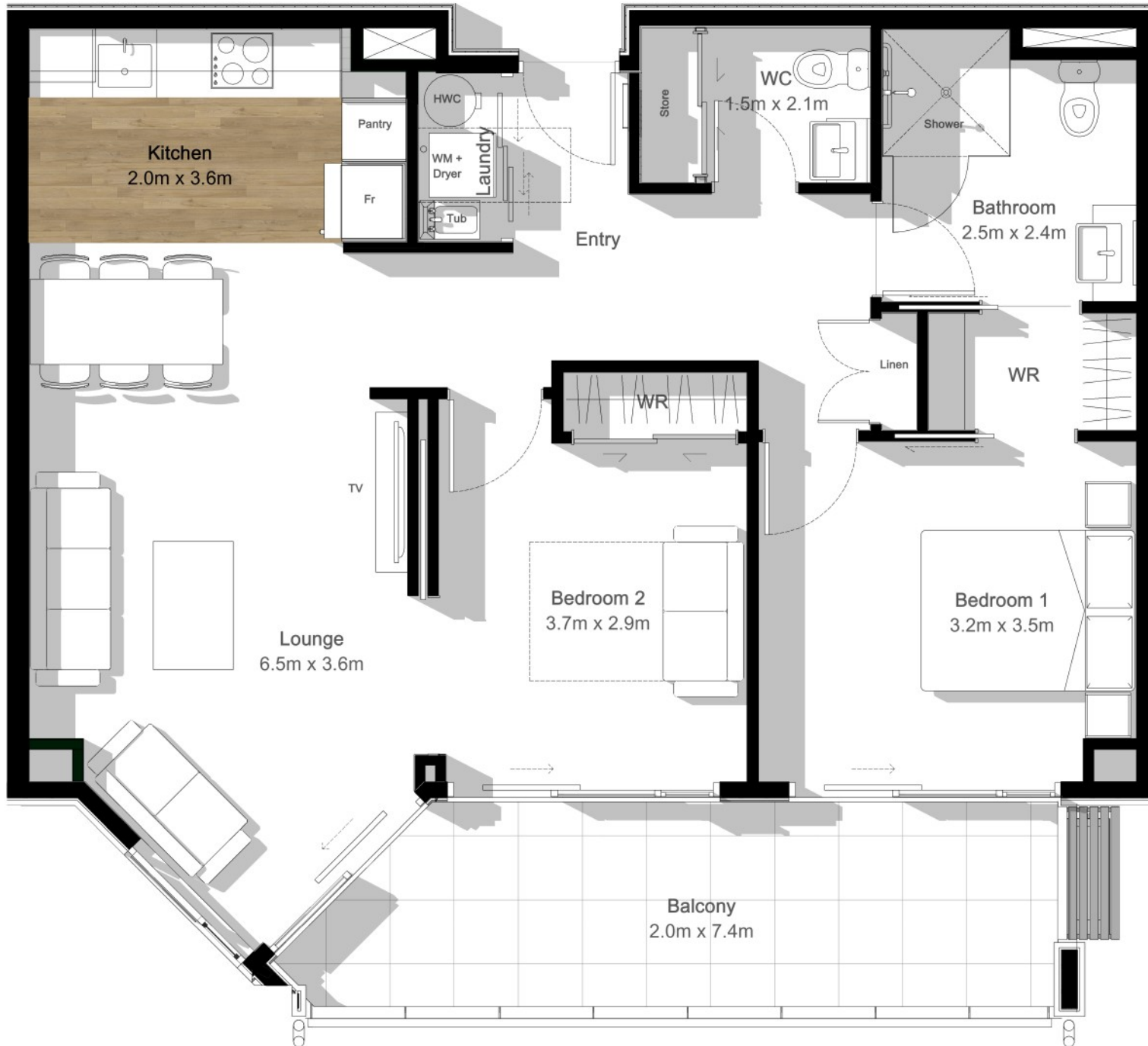
2 x Bedroom

Apartment: 78.60 m²

Balcony: 14.20 m²

Total Area: 92.80 m²

(Not to scale)



1 x Bedroom / Stage 2

North Facing

Apartment: 61.60 m²

Balcony: 8.00 m²

Total Area: 69.60 m²

(Not to scale)



1 x Bedroom / Stage 2

South Facing

Apartment: 54.20 m²

Balcony: 18.30 m²

Total Area: 72.50 m²

(Not to scale)





Existing House

Existing House

Existing House

Existing House

Existing Community Centre

Existing House

Existing House

Existing House

Proposed Car Park

Proposed Car Park

Petanque

Stage 3

Stage 2

Stage 1

Entry

Entry

Boundary

Boundary Fence

Boundary Fence

Boundary Fence

Esplanade Reserve

Public Walkway

Public Walkway

Boundary Fence

Level 1 — Ground Floor Plan



Plan not to scale

Level 2 - Floor Plan



Plan not to scale

Level 3 — Floor Plan



Plan not to scale



Artist Impression — Main Entrance

These plans are illustrated only and are subject to change without notice



Artist Impression — Western Aerial View

These plans are illustrated only and are subject to change without notice



Artist Impression — Southern Aerial View

These plans are illustrated only and are subject to change without notice



Artist Impression — Western Ground View

These plans are illustrated only and are subject to change without notice



Artist Impression — Southern Ground View

These plans are illustrated only and are subject to change without notice

